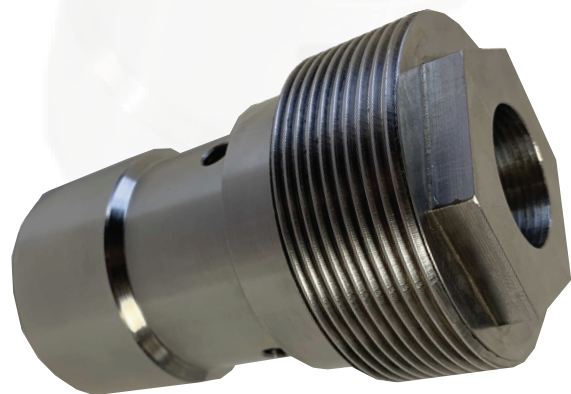




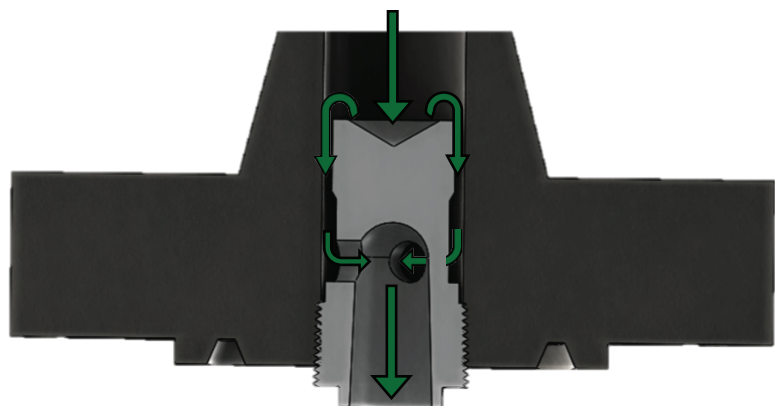
Extreme Flow Protection



- Choke Valve Protection
- Infrastructure Protection
- High Pressure Drop Solution
- Maintain Safe Flows



TRI-FLO DIFFUSER



Design Principles

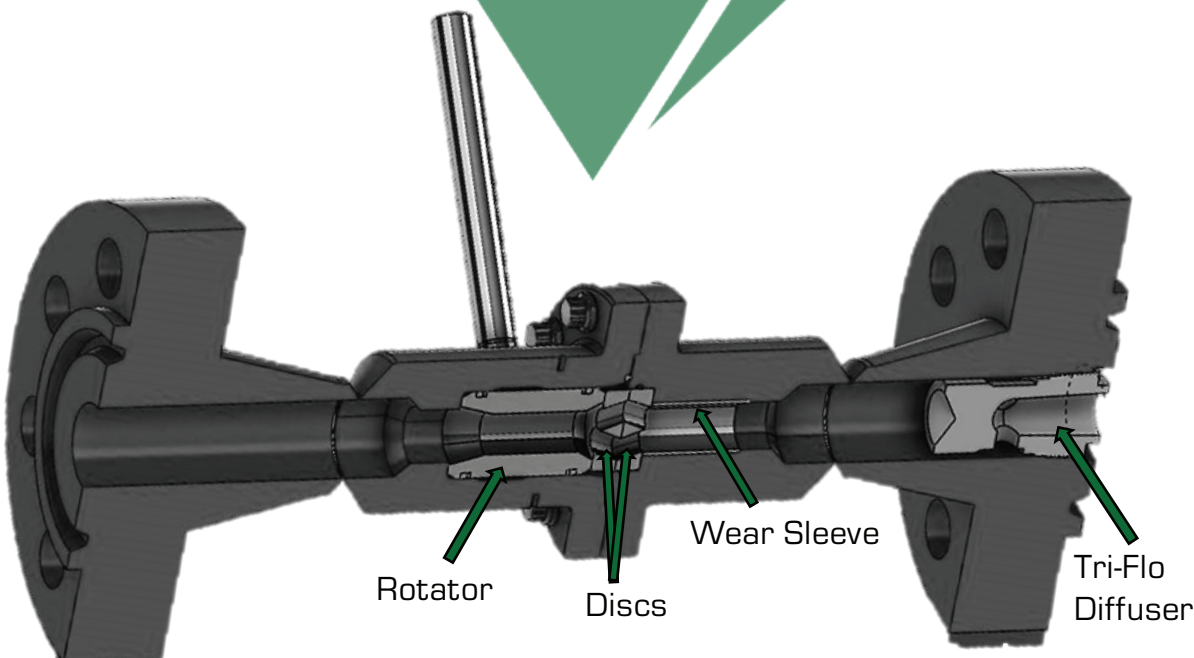
- Redirects flow pattern through the choke
- Eliminates damaging flow characteristics through converging patterns
- Creates a secondary pressure drop within the valve
- Maintains unobstructed volumes through the choke due to an increased flow area

Applications

- To be used with 2" multi-orifice style choke valves - MC,MDI, MDA
- Designed for high pressure drop applications & pressure differentials

Sizes Available

- 1/4", 3/8", 1/2", 5/8", 3/4"
- Threaded or Wafer



Patented by Kerr-Netic Solutions

Manufactured & Distributed by:



www.kingsenergy.com

1-866-660-KING

info@kingsenergy.com